

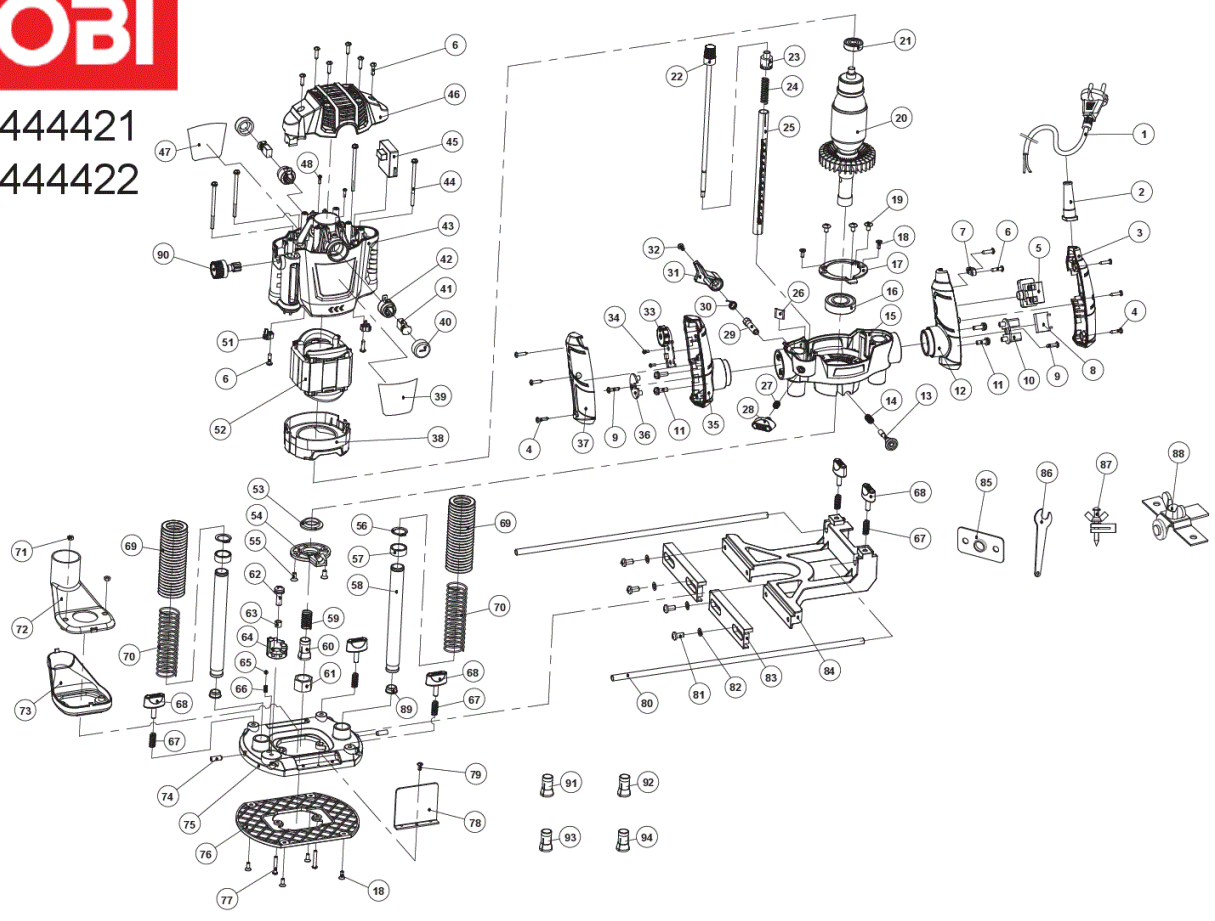
RRT1600P-K 1600W ROUTER IN2

5133004801 - RRT1600P-K - 4000444421





4000444421
4000444422



Position	Quantity	Description	Part number	EAN
1001	1	Power Cordplug assembly EU240V	5131197945	4002395165308
1002	1	Cable armor	5131000000	
1003	1	Right handle cover	5131000000	
1004	6	Self-tapping screw	5131000000	
1005	1	Switch	5131197949	4002395165346
1006	10	Self-tapping screw	5131000000	
1007	1	Cable pressboard	5131000000	
1008	1	Capacitor 0.33	5131197952	4002395165377
1009	2	Self-tapping screw	5131000000	
1010	1	Wire shield A	5131000000	
1011	4	Tapping screw	5131000000	
1012	1	Right handle	5131000000	
1013	1	Radial self-locking pin	5131197957	4002395166022
1014	1	Self-locking spring	5131197958	4002395166039
1015	1	Gear box	5131000000	
1016	1	Rolling bearing	5131197960	4002395166053
1017	1	Wind guard	5131197961	4002395166060
1018	6	Tapping screw	5131197962	4002395166077
1019	3	Tapping screw	5131000000	
1020	1	Rotor	5131197964	4002395166091
1021	1	Rolling bearing	5131197965	4002395166701
1022	1	Dynamic adjusting knob	5131197966	4002395166718
1023	1	Static adjusting knob	5131197967	4002395166725
1024	1	Adjusting pole spring	5131197968	4002395166732
1025	1	Ruler knob	5131197969	4002395166749
1026	1	Bush of ruler	5131197970	4002395166756
1027	1	Knob spring	5131197971	4002395166763
1028	1	Knob of ruler	5131197972	4002395166770
1029	1	Locking screw	5131197973	4002395166787
1030	1	Sprain	5131000000	
1031	1	Spanner	5131197975	4002395167401
1032	1	Tapping screw	5131000000	
1033	1	Speed regulator	5131197977	4002395167425
1034	2	Screw	5131000000	
1035	1	Left handle	5131000000	
1036	1	Wire shield B	5131197980	4002395167456
1037	1	Left handle cover	5131000000	
1038	1	Wind baffle	5131000000	
1039	1	Logo plate	5131197983	4002395167487
1040	2	Brush holder cap	5131197984	4002395167494
1041	2	Carbon brush	5131197985	4002395164707
1042	2	Brush holder	5131197986	4002395164714
1043	1	House	5131000000	
1044	4	Tapping screw	5131000000	
1045	1	ELECTRONIC ELEMENT	5131197989	4002395164745
1046	1	Top cover	5131000000	
1047	1	Data plate	5131197991	4002395164769
1048	2	Self-tapping screw	5131000000	
1051	1	Cable of Stator	5131000000	
1052	1	Stator	5131197996	4002395165414

Position	Quantité	Désignation	Référence	EAN
1053	1	Rotor locating nut	5131197997	4002395165421
1054	1	Fore cover	5131197998	4002395165438
1055	2	Countersunk screw	5131197999	4002395165445
1056	2	Circlip for shaft 18	5131000000	
1057	2	Bush	5131198001	4002395165469
1058	2	Guide pipe	5131000000	
1059	1	Collet spring	5131198003	4002395165483
1060	1	COLLET 8MM	5131198004	4002395165490
1061	1	Collet nut	5131198005	4002395166107
1062	1	Screw	5131000000	
1063	1	Steel bush	5131198007	4002395166121
1064	1	Depth stop	5131000000	
1065	1	Steel ball	5131000000	
1066	1	Spring	5131000000	
1067	5	Knob spring	5131198011	4002395166169
1068	5	Locking knob	5131198012	4002395166176
1069	2	Flexible sleeve	5131198013	4002395166183
1070	2	Spring	5131000000	
1071	2	Hex nut	5131198015	4002395166800
1072	1	Dust ejector	5131198016	4002395166817
1073	1	Base of dust ejector	5131198017	4002395166824
1074	2	Hex socket set screw	5131198018	4002395166831
1075	1	Base	5131198019	4002395166848
1076	1	Base plate	5131198020	4002395166855
1077	2	Screw	5131198021	4002395166862
1078	1	Transparent baffle	5131000000	
1079	1	Screw	5131000000	
1080	2	Guiding rod	5131198024	4002395166893
1081	4	screw	5131198025	4002395167500
1082	4	plain washer 6	5131198026	4002395167517
1083	2	rack pad	5131198027	4002395167524
1084	1	Guide rack	5131198028	4002395167531
1085	1	Template guide	5131198029	4002395167548
1086	1	Spanner	5131198030	4002395167555
1087	1	Centring pin	5131198031	4002395167562
1088	1	Copy follower	5131198032	4002395167579
1090	1	ADJUSTING BUTTON	5131033566	4002395147106
1091	1	COLLET 6MM	5131033741	4002395146079
1092	1	COLLET 12MM	5131042316	4058546255305
1093	1	COLLET 6.35MM	5131042452	4058546256661
1094	1	COLLET 12.7MM	5131042453	4058546256678