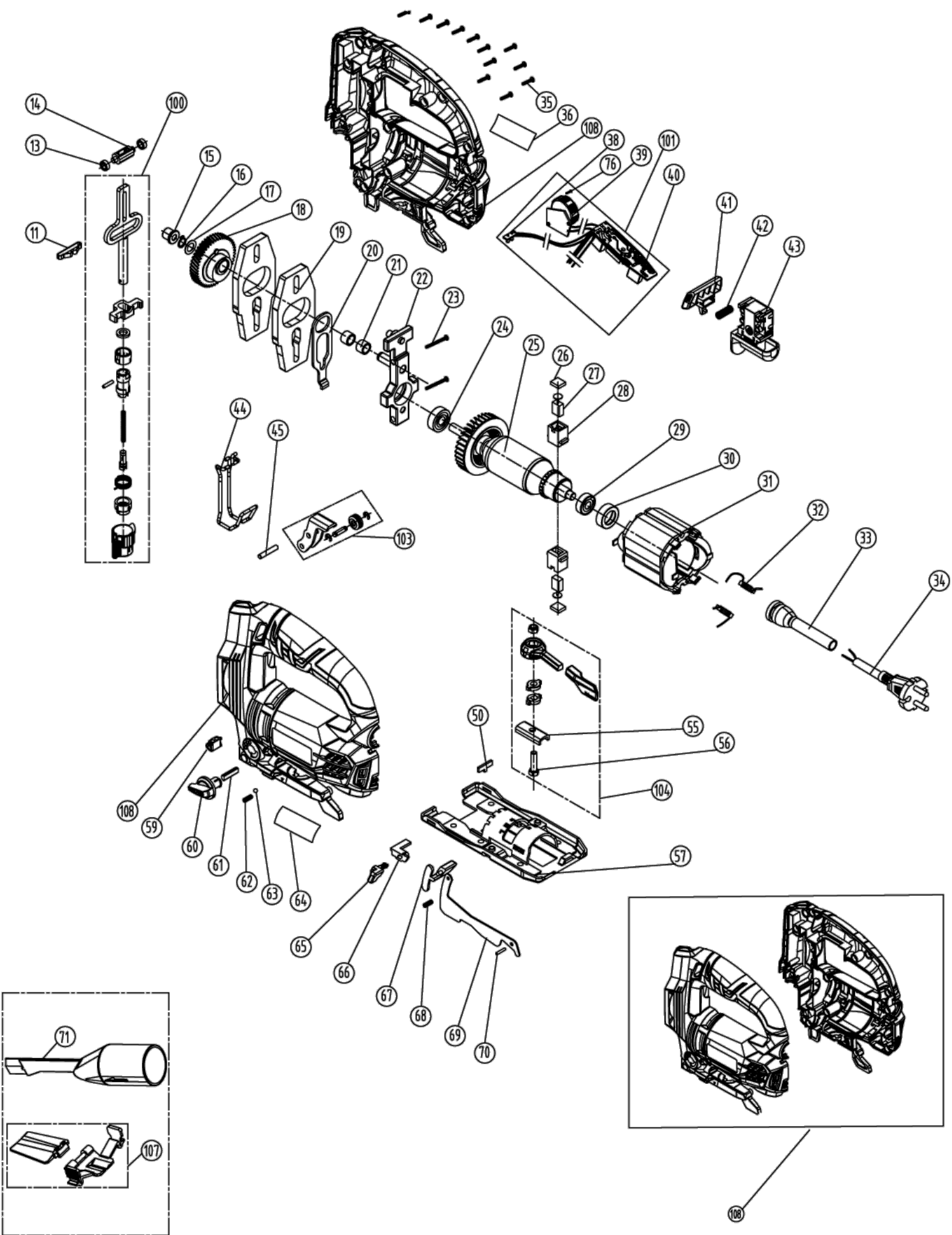


# RJS1050G SCIE SAUT 680W

5133002219 - RJS1050G - 5133002219#1





Position	Quantity	Description	Part number	EAN
011	1	SLIDE PLATE	5131032094	
013	2	BUSHING	5131032095	
014	1	STOP	5131032096	
015	1	GEAR SLEEVE	5131032097	
016	1	CIRCLIP	5131032098	
017	1	WASHER	5131032099	
018	1	GEAR	5131032100	
019	2	BALANCER	5131032101	
020	1	DRIVE	5131032102	
021	2	NEEDLE BEARING	5131032103	
022	1	BEARING BRACKET	5131032104	
023	2	SCREW	5131032105	
024	1	BALL BEARING	5131032106	
025	1	ARMATURE ASSEMBLY	5131032107	
026	2	BRUSH COVER	5131032108	
027	2	CARBON BRUSH	5131032109	
028	2	CARBON HOLDER	5131032110	
029	1	BALL BEARING	5131032111	
030	1	BEARING SLEEVE	5131032112	
031	1	ELECTRIC FIELD	5131032113	
032	2	CHOKING COIL	5131032114	
033	1	PROTECTION SLEEVE	5131032115	
034	1	CONNECTION CABLE	5131032116	
035	12	SCREW	5131032117	
036	1	LABEL	5131032141	
041	1	LOCKING PIN	5131032120	
042	1	SPRING	5131032121	
043	1	SWITCH	5131032122	
044	1	ROD	5131032123	
045	1	PIN	5131032124	
050	1	INSERT F.BASE PLATE	5131032126	
055	1	BUFFER PLATE	5131032206	
056	1	SCREW	5131032207	
057	1	BASE PLATE	5131032128	
059	1	LENS PAD	5131032129	
061	1	SPINDLE	5131032131	
062	1	SPRING	5131032132	
063	1	BALL	5131032133	
064	1	LABEL	5131032140	
065	1	TRIGGER	5131032134	
066	1	LEVER	5131032135	
067	1	BUTTON	5131032136	
068	1	SPRING	5131032137	
069	1	PLATE STRAIGHTENER	5131032138	
070	1	PIN	5131032139	
071	1	DUST REFLECTOR	5131032143	
076	1	SCREW	5131032142	
100	1	SAW BAR ASSY	5131032093	
101	1	ELECT.CIRCUIT BOARD	5131032119	
103	1	GUIDE ROLLER	5131032125	

<b>Position</b>	<b>Quantité</b>	<b>Désignation</b>	<b>Référence</b>	<b>EAN</b>
104	1	OPERATION LEVER	5131032127	
107	1	GUIDE	5131032144	
108	1	MOTOR HOUSING	5131032118	